

CENTENNIAL GREENWAY ALIGNMENT STUDY



Olivette
...in the center of it all

MEETING AGENDA

- Welcome
- About Great Rivers Greenway
- Planning Process
- Review of Last Meeting
- Project Goals
- Alignment Options Preview
- How to Give Input
- Next Steps



ABOUT GREAT RIVERS GREENWAY

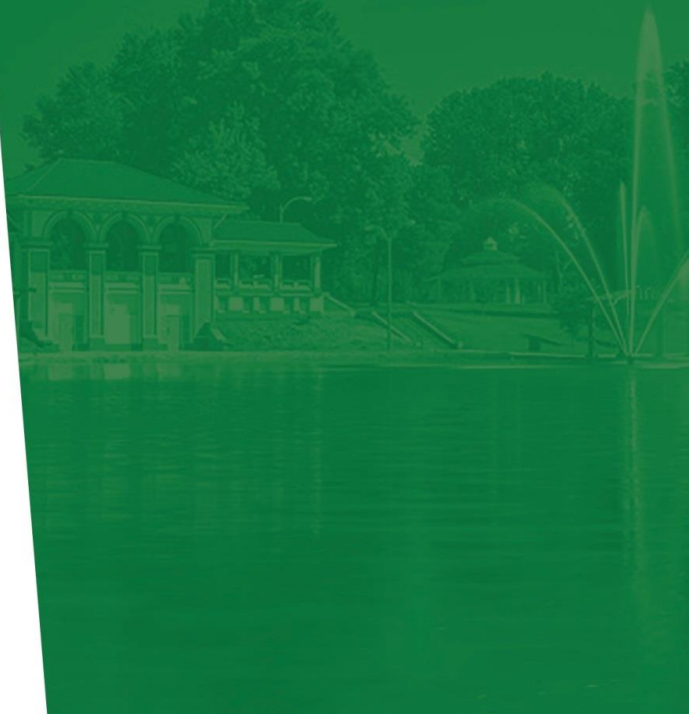
The public agency connecting the St. Louis region with greenways.

A vote of the people created a sales tax to leave a legacy for future generations by connecting some of the region's best assets – Rivers and Parks

ST. LOUIS CITY

ST. LOUIS COUNTY

ST. CHARLES COUNTY



VISION:

a dynamic network of greenways connecting our communities - strengthening the social, economic and environmental well-being of our region





Great Rivers Greenway



16 GREENWAYS

54 PROJECTS

250+ PARTNERS

125+ MILES OF GREENWAY

2 MILLION VISITS/YEAR

38K ACRES PUBLIC LANDS

93¢ RETURNED TO YOU

GREENWAYS CONNECT OUR REGION
GREENWAYS BENEFIT OUR PERSONAL WELL-BEING IMMEDIATELY
GREENWAYS STRENGTHEN OUR CIVIC WELL-BEING NOW AND FOR THE FUTURE

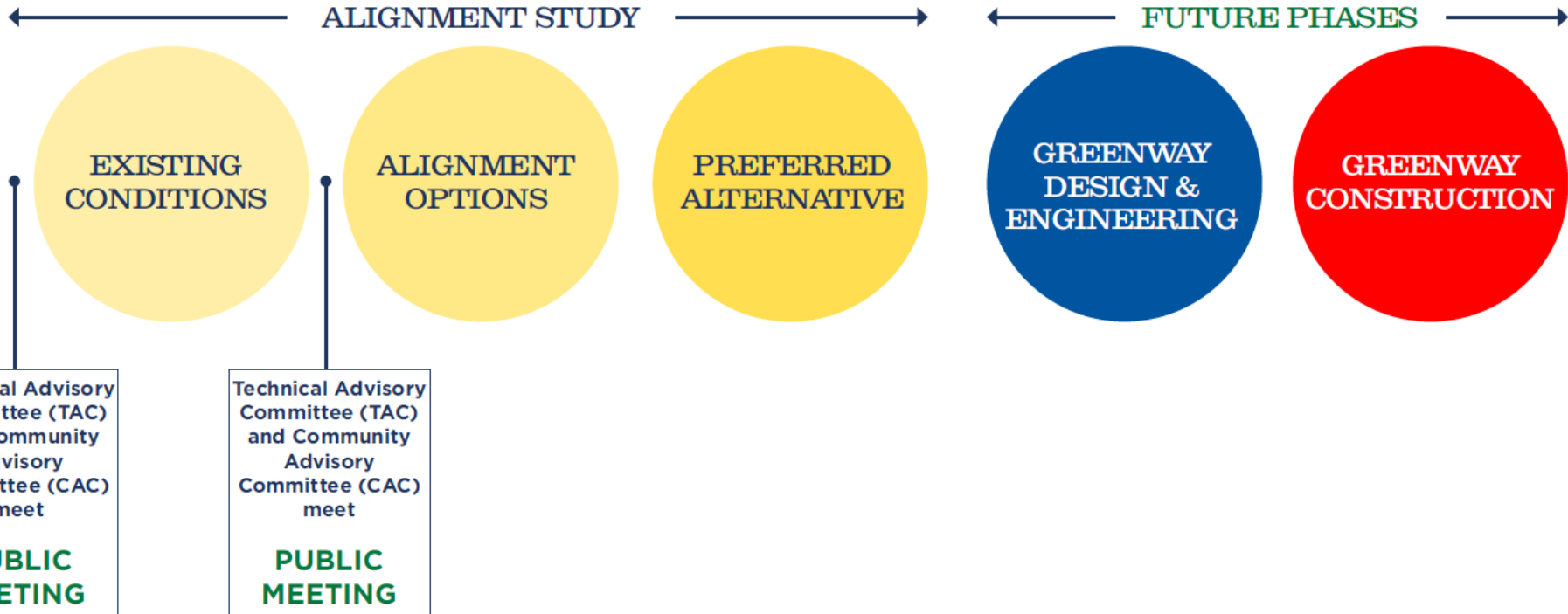


MEETING AGENDA

- ✓ Welcome
- ✓ About Great Rivers Greenway
 - Planning Process
 - Review of Last Meeting
 - Project Goals
 - Alignment Options Preview
 - How to Give Input
 - Next Steps



ENGAGEMENT/CENTENNIAL GREENWAY PROJECT PROCESS DIAGRAM



| HOW CAN YOU HELP?

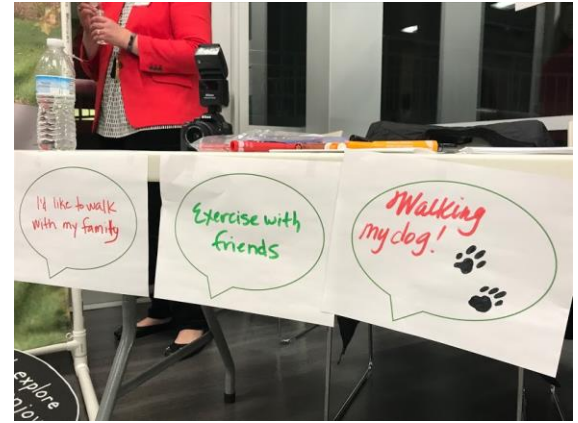
- Provide your thoughts; whether ideas or concerns
 - Share information about the project with others (friends, neighbors, colleagues)
 - Encourage others to get on the website and share their input on the alignments before January 12, 2019
- » www.greatriversgreenway.org/olivette
- We promise to consider your input and we will show you how we applied it

MEETING AGENDA

- ✓ Welcome
- ✓ About Great Rivers Greenway
- ✓ Planning Process
- Review of Last Meeting
- Project Goals
- Alignment Options Preview
- How to Give Input
- Next Steps

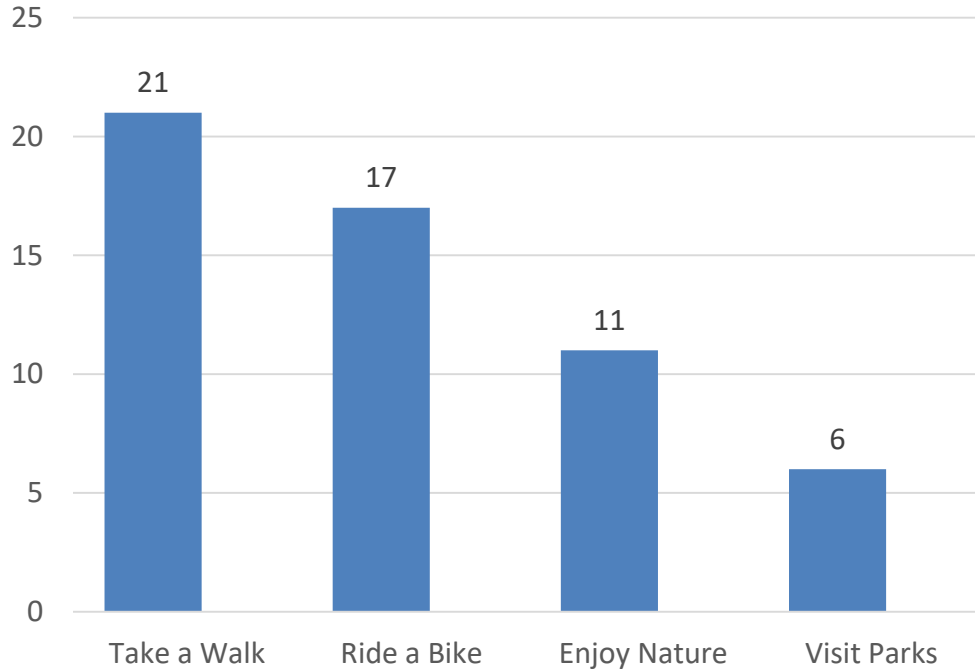


PUBLIC MEETING #1, NOVEMBER 8TH



FINDINGS

What would you like to do on the greenway?



MEETING AGENDA

- ✓ Welcome
- ✓ About Great Rivers Greenway
- ✓ Planning Process
- ✓ Review of Last Meeting
- Project Goals
- Alignment Options Preview
- How to Give Input
- Next Steps



STUDY AREA

Bound on the north by
Page Avenue

Bound on the east by
Interstate 170

Bound on the south by
Olivette City Boundary

Bound on the west by
Warson Road



PROJECT GOALS

2006 Master Plan Principles

**2018 GRG
Project Objectives**

**2018 CAC
Project Goals**

PROJECT GOALS GATHER



2018 GRG Project Objectives

Partner with the City of Olivette

Create conservation opportunities and access to nature

2018 CAC Project Goals

Maximize usage and increase awareness of current and future pedestrian and bicycle connections

PROJECT GOALS
SYNTHESIZE

Connectivity



PROJECT GOALS FINALIZE



MEETING AGENDA

- ✓ Welcome
- ✓ About Great Rivers Greenway
- ✓ Planning Process
- ✓ Review of Last Meeting
- ✓ Project Goals
- Alignment Options Preview
- How to Give Input
- Next Steps



2006 Master Plan

17-mile corridor that stretches between Forest Park in the City of St. Louis to St. Charles County

When complete, it will connect the City of St. Louis, Clayton, University City, Ladue, Olivette, Creve Coeur, Maryland Heights and St. Charles

3 segments completed: Forest Park to the Delmar Loop; Shaw Park to Olive; and the Katy Trail to the St. Charles Heritage Museum

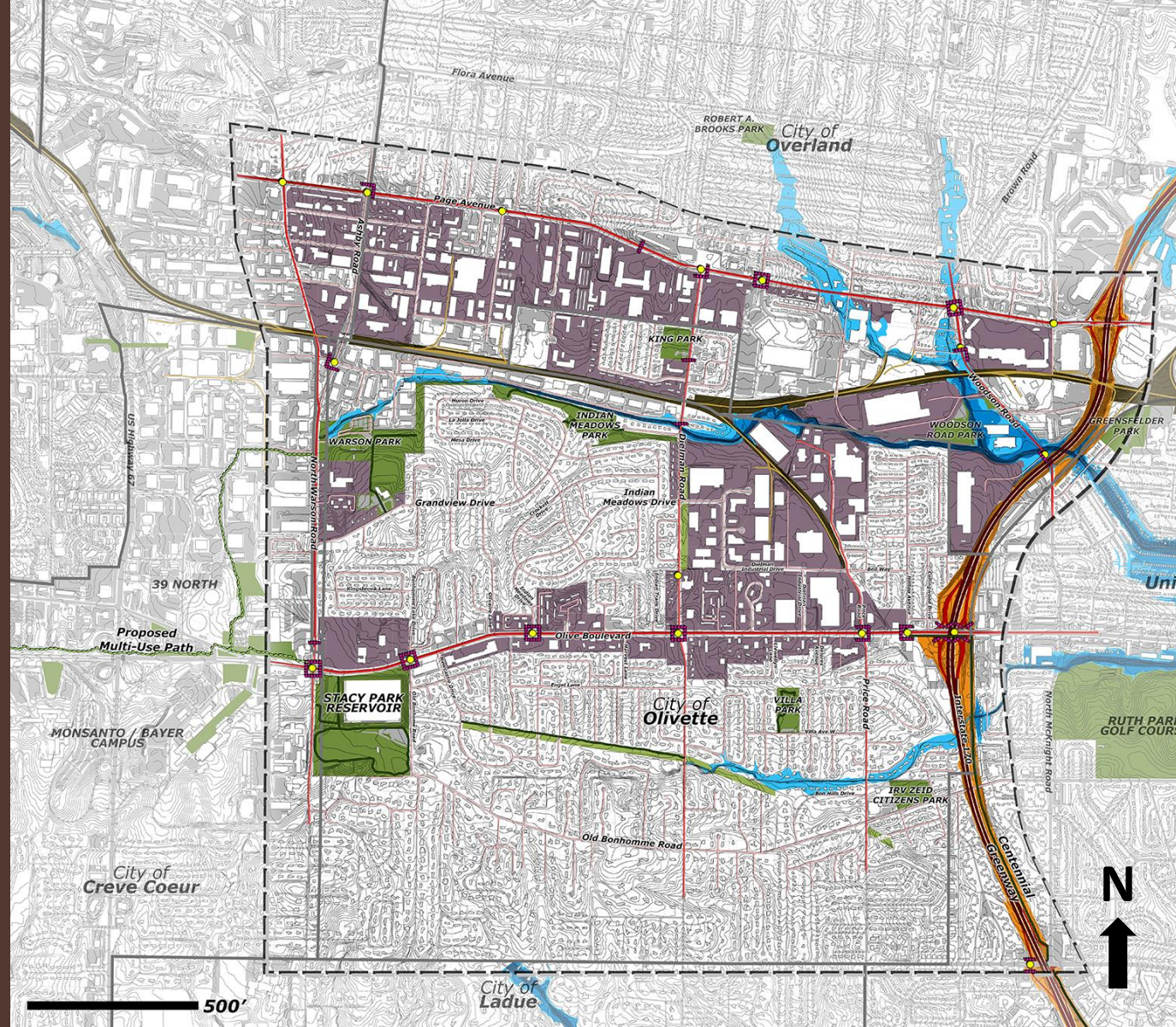


Great Rivers Greenway

BARRIERS AND CONSTRAINTS

LEGEND

-  River Des Peres Floodway
-  FEMA 1%
100-Yr Floodplain / 1% Chance of Occurring in a Year
-  FEMA 0.2%
500-Yr Floodplain / 0.2% Chance of Occurring in a Year
-  Highway Right-of-Way
-  55 MPH Speed Limit
-  45 MPH Speed Limit
-  40 MPH Speed Limit
-  35 MPH Speed Limit
-  30 MPH Speed Limit
-  20 MPH Speed Limit
-  Pedestrian Crossings
-  Traffic Signals
-  Railroad Right-of-Way
-  Railroad Tracks
-  City Blocks (Length > 600')
-  Existing Parks & Open Space
-  Existing Trails & Greenways



EXPLORING THE STUDY AREA

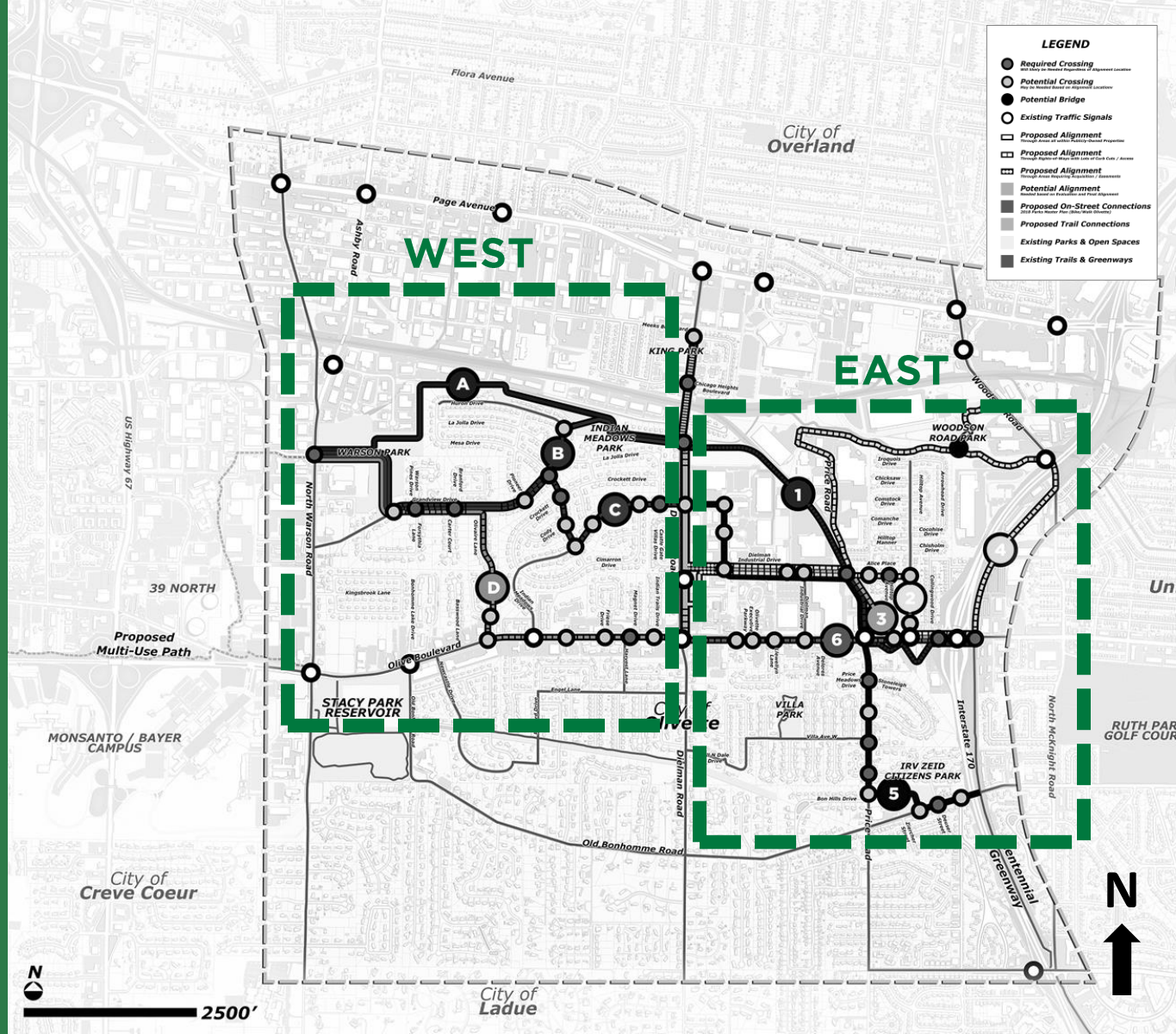


ALTERNATIVE ALIGNMENTS - ORIGINAL

Based on input from Public Meeting #1 and Community Advisory Committee

East of Dielman Road (6 alternatives)

West of Dielman Road (4 alternatives)



PROPOSED ALIGNMENTS

EAST:

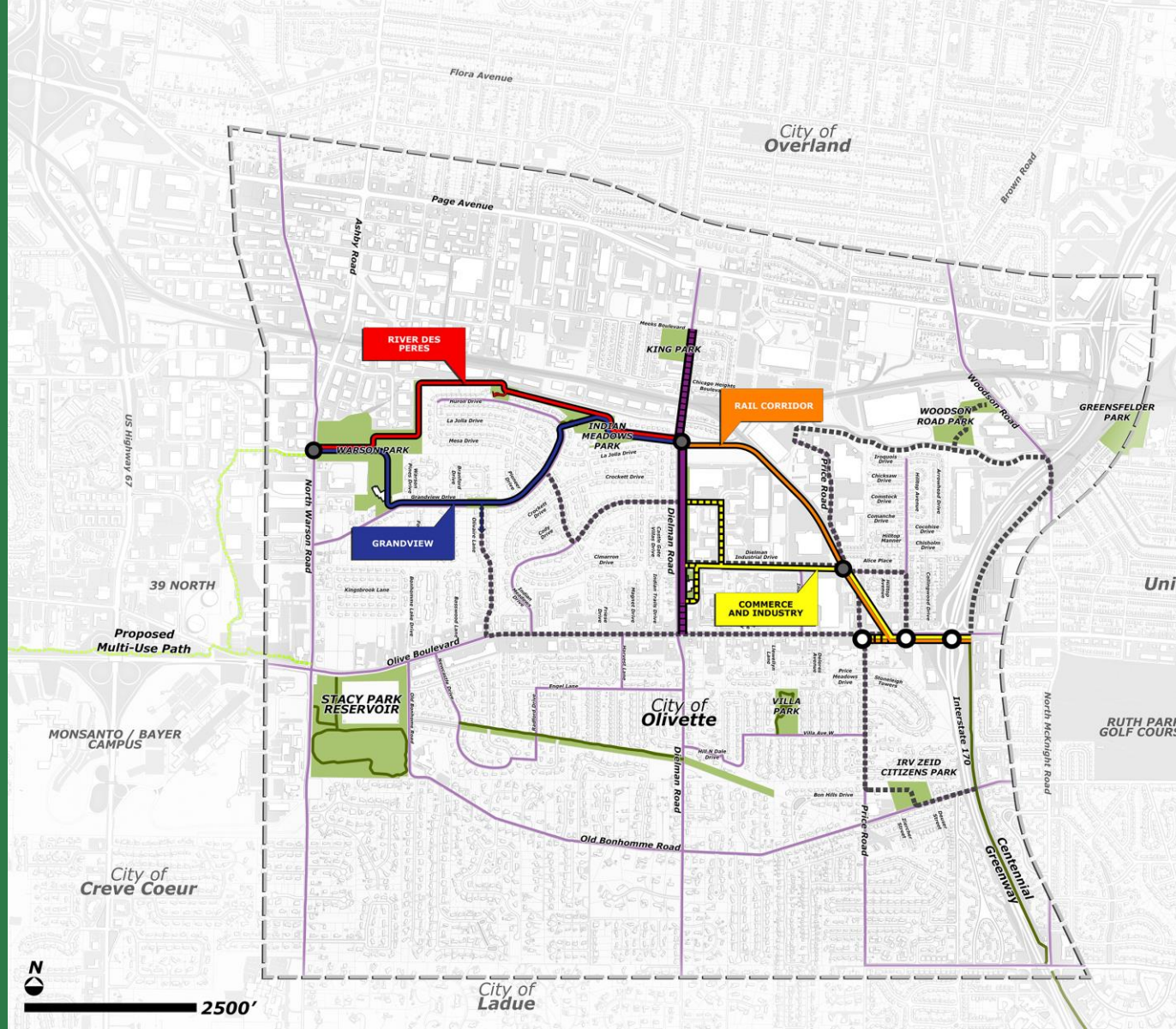
Rail Corridor

Dielman Industrial

WEST:

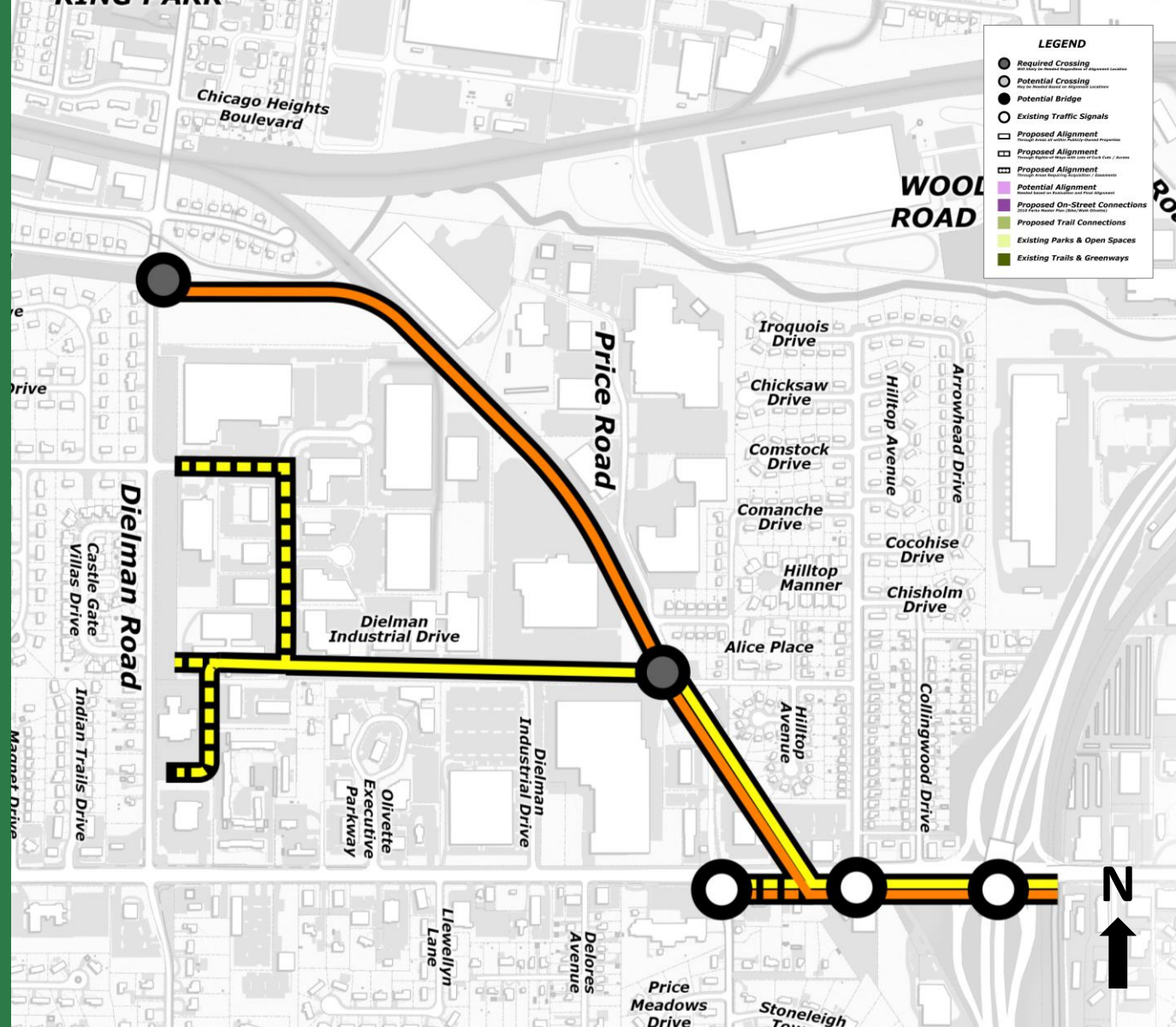
Grandview

River Des Peres



ALTERNATIVES

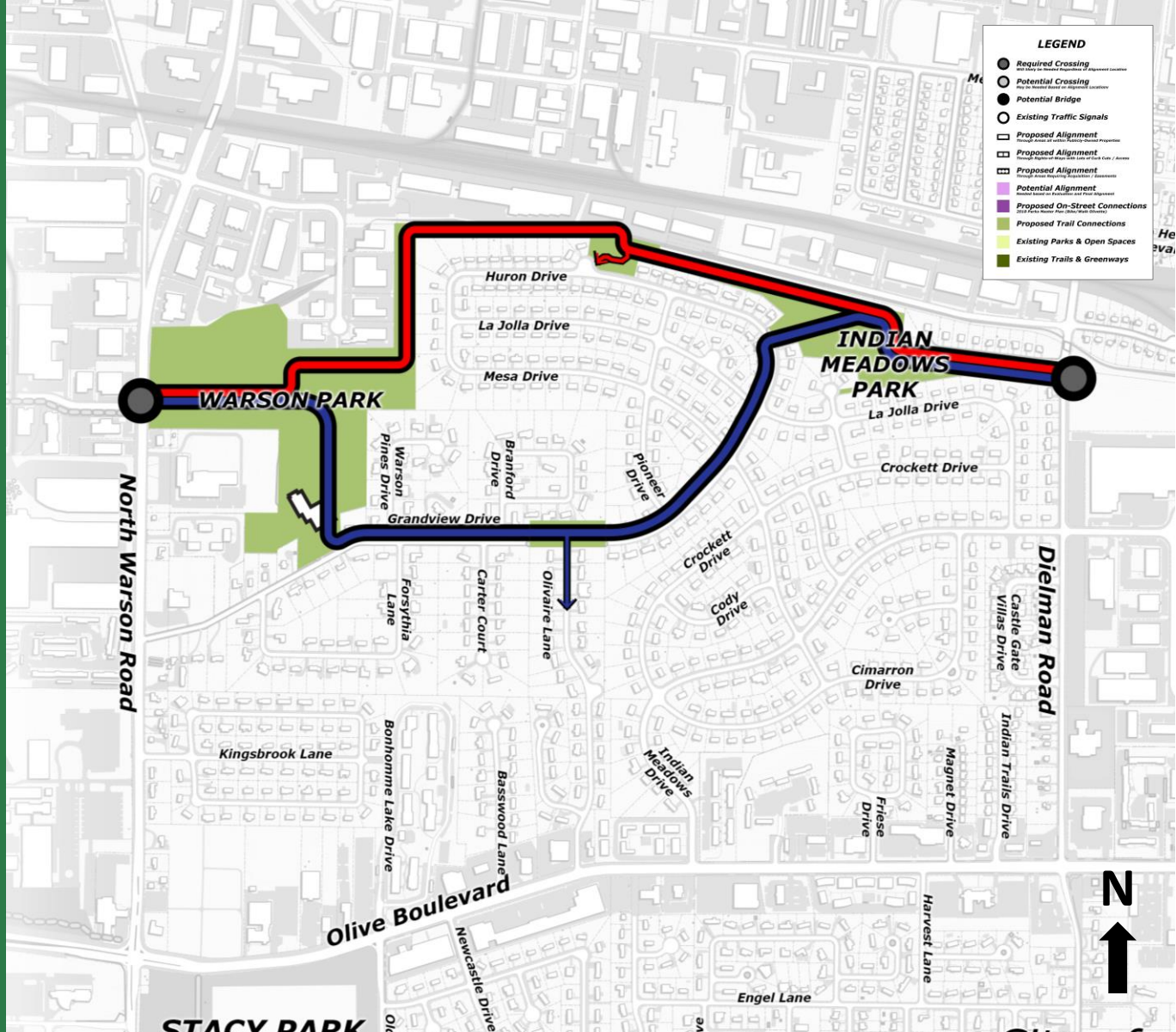
East End



LEGEND

- Required Crossing
- Potential Crossing
- Potential Bridge
- Existing Traffic Signals
- ▭ Proposed Alignment
- ▭ Proposed Alignment
- ▭ Proposed Alignment
- ▭ Potential Alignment
- ▭ Proposed On-Street Connections
- ▭ Proposed Trail Connections
- ▭ Existing Parks & Open Spaces
- ▭ Existing Trails & Greenways

ALTERNATIVES WEST OF DIELMAN



GREENWAY DESIGN

EXAMPLES OF WHAT THE GREENWAY COULD LOOK LIKE



Commercial

GREENWAY DESIGN

EXAMPLES OF WHAT THE GREENWAY COULD LOOK LIKE



Railroad

GREENWAY DESIGN

EXAMPLES OF WHAT THE GREENWAY COULD LOOK LIKE



Residential

NEXT STEPS

- CAC meeting January 2019
- Preferred Alignment January 2019



THANK YOU

A woman with her arms raised in joy, standing in a water fountain. The background is a blurred city street scene.

Great Rivers Greenway

Shaughnessy Daniels

sdaniels@grgstl.org

(314.) 436-7009

City of Olivette

Beverly Tucker Knight

btuckerknight@olivettemo.com

(314) 991-1249

Project Team

Jennifer Pangborn

j.Pangborn@wsp.com

(314) 206-4414

www.greatriversgreenway.org/olivette